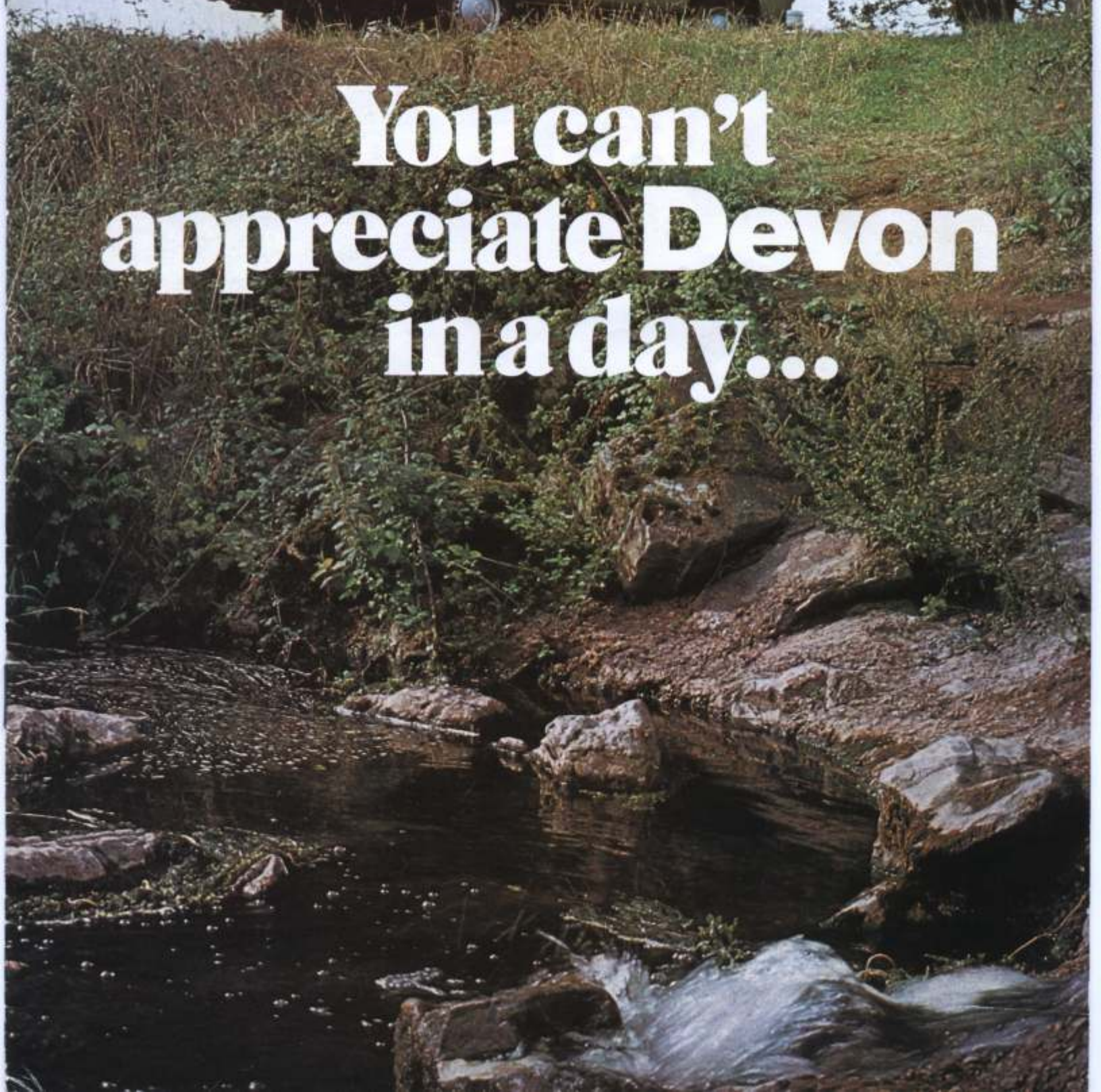




**You can't  
appreciate Devon  
in a day...**



**...you'll appreciate  
your Devon  
every day.**



**The Eurovettes and Devonettes**



# Monday



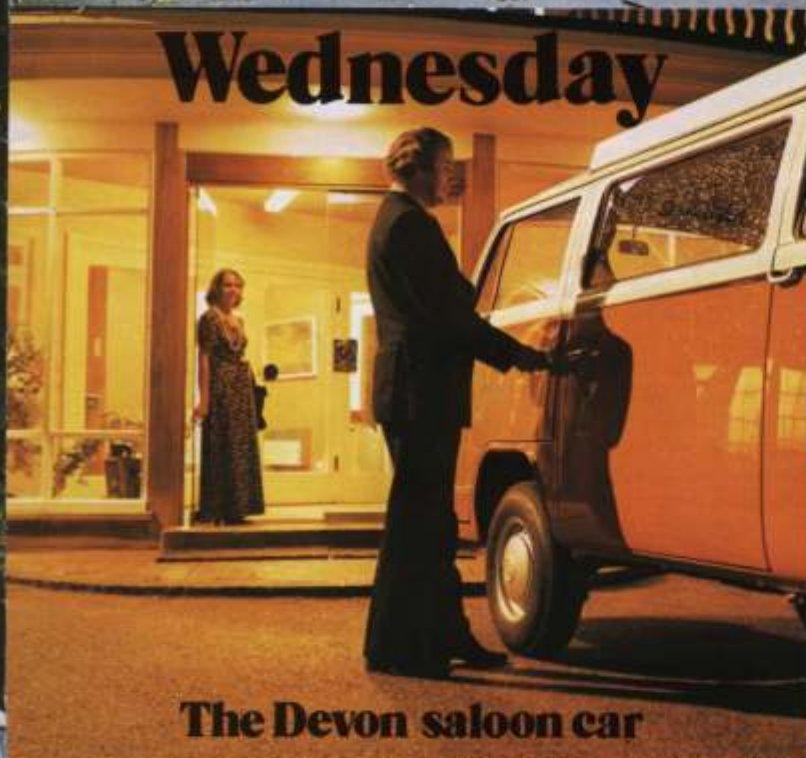
**The Devon minibus**

# Tuesday



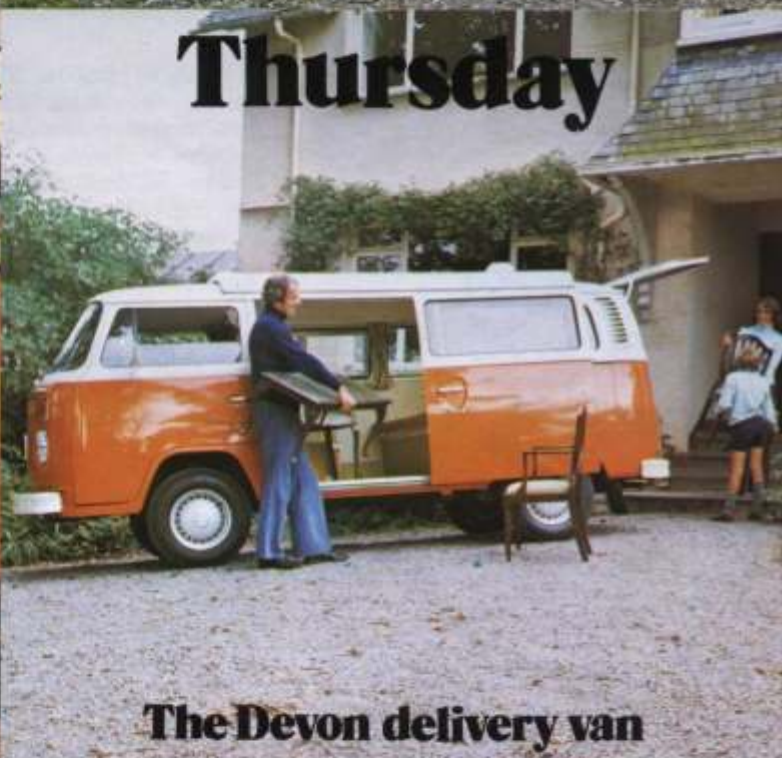
**The Devon estate car**

# Wednesday



**The Devon saloon car**

# Thursday



**The Devon delivery van**

# Friday



**The Devon shopper**

# Weekend



**The Devon mobile holiday home**



# Inside the Eurovette

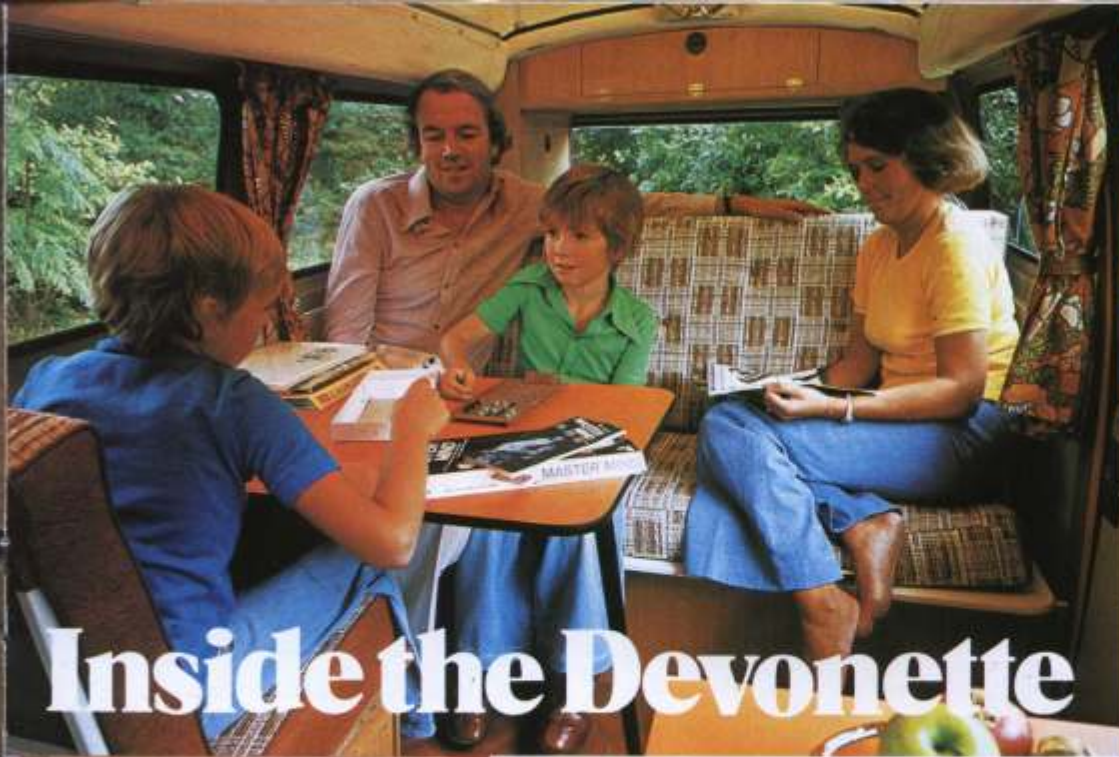


THE EUROVETTE is a quality motor caravan based on the Volkswagen. The optional elevating roof, designed by Devon, will provide two full-length bunks, while the daytime seating converts into a luxurious double bed to sleep two adults.

And the Eurovette has all the following features as standard: the Devon patented swing-out cooker with two burners and a grill; stainless steel sink unit with electric pump; food cool box; good storage space for food, luggage, bedding and clothes; a table for use inside or out; an interior fluorescent light; louvred window. (See overleaf and back page for detailed specifications).

Among the many extras available are refrigerator, child's bunk and a drive-away tent.





# Inside the Devonette

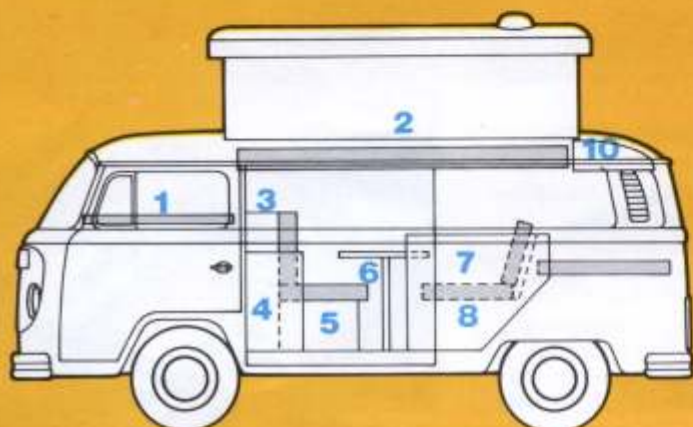
THE DEVONETTE motor caravan, also based on the Volkswagen, has truly popular appeal. Among its many attractive standard features are: the Devon patented swing-out cooker with two burners and a grill; good storage space for clothes, bedding and luggage; a large dining table; interior fluorescent light; louvred window and deep foam reversible cushions. The daytime seating converts to a large double bed in seconds. (See overleaf and back page for detailed specifications).

The Devon-designed elevating roof can also be fitted as an optional extra to the Devonette, to provide two full-length bunks. A number of other optional extras are also available.

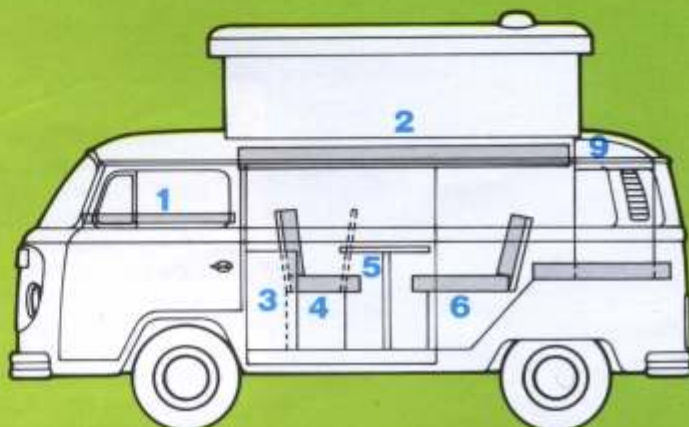


# The Eurovette and Devonette by day and night

## The Eurovette



## The Devonette



- 1 Child's bunk (optional extra).
- 2 Devon Elevating Roof with two full length bunks (optional extra).
- 3 Wardrobe.
- 4 Cooker cabinet.
- 5 Removable rear facing seat with flap extension, plus storage unit beneath.
- 6 Foldaway dining table (detaches for use outside).
- 7 Sink unit (incorporates drainage board, crockery storage basket, insulated cool box and 5 gallon water container).
- 8 Rear bench seat, with storage unit beneath.  
Converts to . . .
- 9 Double bed.
- 10 Roof locker.
- 11 Spare wheel.

- 1 Child's bunk (optional extra).
- 2 Devon Elevating Roof with two full length bunks (optional extra).
- 3 Cooker cabinet.
- 4 Rear/front facing seat with flap extension, plus storage unit beneath.
- 5 Detachable dining table.
- 6 Rear bench seat with storage unit and insulated food box beneath.  
Converts to . . .
- 7 Double bed.
- 8 Wardrobe.
- 9 Roof locker.
- 10 Spare wheel.

# The Continental

The Volkswagen Continental, imported from West Germany, is a luxury motor caravan with a stainless steel cooker, pumped water supply, food cooler box and a full-length wardrobe among its standard fittings. Furnishings are particularly luxurious with wall-to-wall carpeting, birch-ply wall and ceiling panels plus high-quality cabinet work in a mahogany laminate finish. Also standard is a self-locking elevating roof, opening towards the front for more headroom. Within the elevating roof is a comfortable double bed. Details and specifications can be found on the back page.



## The Devon Elevating Roof

Our patented weatherproof elevating roof has been designed by us and is made entirely in our own factory. It has a heavy duty fibreglass top with 2 air vents and reinforced plastic sides. The headlining incorporates a hard-board and expanded polystyrene insulation sandwich, minimising noise, vibration and condensation. Elevation and retraction are assisted by spring loaded metal tubing fixed

to a double metal frame. Rigidity supports and safety catches are included.

The roof also incorporates 2 full length bunks slung on unique and ingenious metal bracket supports. Both the bunks stow away inconspicuously when not in use. The photo also shows the useful extra locker space below the elevating roof.



## The Devon Drive-Away Tent



Quality made by S.T. Harrison of Bristol. Fixes easily on to your vehicle with a clip on double plastic channel and two elastic cords. Drive away, and you leave a completely enclosed, self-supporting tent on a tubular frame, which will keep your site reserved for you.

There are two side windows with curtains to give you complete privacy. The front wall can be raised to form a sun canopy or rolled up and held by tie tapes. The floor area is approximately 10ft x 6ft 6 ins (65 sq ft). Mudwalls are easy-clean plastic over a strong synthetic frame. All the zips are of high-quality polyester on white proofed tape.

The Devon Drive-Away Tent includes curtains, guylines and pegs. Plus a bag for the canvas section and one for the framework.

A groundsheet is also available.

# Getting down to details

## Devon Eurovette

Cooker cabinet designed to swing through 90° (for optional use outside) with the added facility of complete removal. The cabinet contains stainless steel cooker with two burners, grill, grill tray, splash guard, chrome plate rack and large storage cupboard.

Stainless steel sink with draining board, faucet and electric water pump.

Crockery storage basket.

5 gallon water container (plus 1 gallon reserve).

1 cu.ft. insulated food cool box cabinet.

Foldaway dining table (detachable, complete with legs for use outside).

Removable rear-facing seat with storage unit beneath, with extra flap seat for dining.

Forward facing rear bench seat, with storage beneath, converts to double bed.

Forward mounted wardrobe.

Roof storage locker.

Engine deck cushion.

Floor covered in hard wearing non-slip vinyl cushionfloor.

All work surfaces heat resistant melamine.

All windows fitted with Velcro-fastened curtains in Sanderson flame retardant material on alloy track.

Deep foam cushions in textured fabric, with matching spare wheel cover.

Interior trim panels covered in textured foam backed vinyl.

Headlining in finely textured vinyl.

Rosewood faced patterned woodwork.

Long interior fluorescent light.

Double louvred side window.

## Devonette

Cooker cabinet as Eurovette.

2 gallon water container and portable wash bowl.

Removable insulated food storage box.

Detachable, single leg dining table.

Forward/rear facing single seat with storage locker beneath, with extra flap seat for dining.

Forward facing seat with storage locker beneath. Converts to extra large double bed.

Rear mounted wardrobe and roof locker.

Engine deck cushion.

Floor covered in hard wearing non-slip vinyl cushionfloor.

All work surfaces covered in heat resistant melamine.

All windows fitted with Velcro-fastened curtains in Sanderson flame retardant material on alloy track.

Deep foam cushions in fabric with heavy duty vinyl on sides and reverse.

Vinyl covered interior trim panels.

Headlining covered in finely textured vinyl.

Oak faced timber and melamine cabinet surfaces.

Double louvred side window.

Interior fluorescent light.

## The VW Continental

Stainless steel 2 burner cooker with grill.

Stainless steel sink fitted with electric pump. 6½ gallon water tank.

1 cu ft insulated food box.

Multi-use swivel table.

Wardrobe fitted with mirrored door.

Large storage lockers under rear seats.

2 louvred side windows.

Fibreglass elevating roof fitted with a 6ft double bed and 3 ventilation panels.

Cabinets edged in soft plastic.

Forward facing bench seat converting to double bed.

Fixed side facing bench seat.

Felt-backed carpeting throughout.

General storage and cooking utensil cabinets.

Birch plywood wall and headlining panels.

Curtains for all windows.

Spare wheel cover.

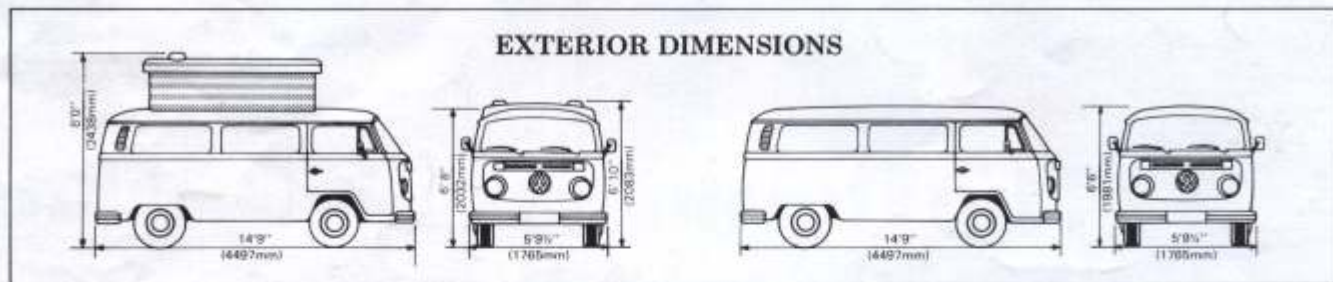
Child's bunk for driving cab.

Cab seats in matching trim.

### TRADE DESCRIPTIONS ACT 1968

Whilst every effort is made to ensure the accuracy of description and specifications in this brochure, changes and alterations may be inevitable due to circumstances beyond our control. We therefore reserve the right to make such changes and alterations at any time without prior notice being given.

Both the Devon Eurovette and the Devonette are available on either the Volkswagen Kombi or Van.  
The Devon Elevating Roof is available as an optional extra on either the Eurovette or the Devonette.



For colour availability see your local  dealer

Sole Official UK  
Motor Caravan  
Converter of the  
Volkswagen.



**Devon**  
**Motor Caravans**

DEVON CONVERSIONS LTD  
Alexandria Works,  
Sidmouth, Devon EX10 9HA  
Telephone (03955) 2345

Member of the  
Renwick Group



Your local Dealer:

