



THE VOLKSWAGEN DORMOBILE 4-BERTH CARAVAN
PRICE £915 COMPLETE (U.K.) *(No Purchase Tax)*



The front and rear covers show a four-berth Volkswagen Dormobile Caravan with patent elevating roof in raised position for camping and closed for normal every day use.

Side view with roof up double side doors open.

Travel where you will . . .

THE new Volkswagen Dormobile Caravan is the latest and most lavishly equipped of the famous Dormobile conversions by Martin Walter. The many novel and ingenious features introduced in the new Volkswagen are the outcome of practical experience.

The many new and extremely attractive features of this exciting caravan include new "Dormatic" seating, a larger roof than ever (with a greatly increased window area), an improved interior layout for easier access and movement, fluorescent lighting which effectively illuminates the whole of the caravan from a point high in the roof, and many detail improvements to specifications and fittings, including all metal cabinets, to make this Volkswagen the finest motorised caravan ever.

Think of the pleasures you can enjoy with the Dormobile Caravan: carefree touring holidays at home or abroad with no need to worry about accommodation or hotel bills. No packing and unpacking suitcases every night. No need to stop at crowded restaurants or hotels for meals—you can eat in comfort wherever you wish. Any caravan owner can enjoy these advantages, but with the Dormobile Caravan you are unaffected by any of the driving restrictions and speed limits which beset those

who have to pull their 'vans along behind them. The Dormobile Caravan can go wherever a car can go—further, even; its excellent ground clearance and powerful engine are perfectly suited for off-the-road travel in search of seclusion.

And of course, during long journeys or at night, passengers are not forced to stare glumly out of the windows or to try to sleep in an uncomfortable position. In the back of the caravan they can enjoy a game of cards round the table or stretch out and relax on the bed-settees.

As well as being an ideal home on wheels, it is a mobile grandstand at races, sports meetings, gymkhanas and other outdoor displays of all kinds. If the weather is unkind, the huge windows in the roof give an excellent viewpoint; refreshments are laid on, and a radio is an optional extra.

Life is not all holidays, of course; for daily use during the week the Volkswagen Dormobile Caravan is an economical family car with a vast luggage capacity and excellent road manners. Vision is excellent all round; The clutch is light, the 4 speed *all-synchro* gearbox is a delight to use. For business or leisure this Volkswagen Dormobile Caravan is a vehicle you will be pleased and proud to own.



FAMOUS THE WORLD OVER VOLKSWAGEN AND THE DORMOBILE CARAVAN



View showing seats arranged for sleeping and top bunks (one open and one closed)



DORMOBILE

Standard Specification

The following items are included in the standard specification of the Volkswagen Dormobile Caravan. New large roof windows; dual exterior coloured scheme; two interior sun visors; interior driving mirror; two exterior chrome-plated mirrors; large luggage compartment at rear; choice of body colours; curtains to all windows; fluorescent interior light; Calor gas 2-burner cooker; 7-gallon plastic water tanks with pump to sink; dressing mirror; wardrobe; sink; blanket locker.

New 'DORMATIC' Seating

The new "Dormatic" seating is a greatly improved version of the famous Dormobile seating. Ingenious but very simple design makes it extremely easy to convert the seats to their many alternative positions. Cushions are spring-laced with foam overlays, and trimmed with P.V.C. borders and panels of porous "Duracour" which is hardwearing and delightfully comfortable. Front seats are separate and fully adjustable; two individual seats behind these can slide together to form a bench seat for three, or fold flat to take two passengers each side. When folded against the body sides, the seats leave a completely clear floor space for luggage.

Cooking

The latest two-burner Calor Gas cooker is built-in with adjoining sink and draining board. Special carrier accommodates gas cylinders in engine compartment. Two plastic water tanks can hold seven gallons of drinking water; the smaller tank is fitted with a handle and cap for easy filling and carrying.

Lighting

An electric light is fitted in the front compartment and a fluorescent tube light is fitted to the front of the roof aperture frame.

Cupboards

Spacious ventilated cupboards with sliding doors are fitted at the rear, underneath the cooker and washbasin, for cooking utensils, provisions and so on. A roomy wardrobe is provided at the rear.

Elevating Roof

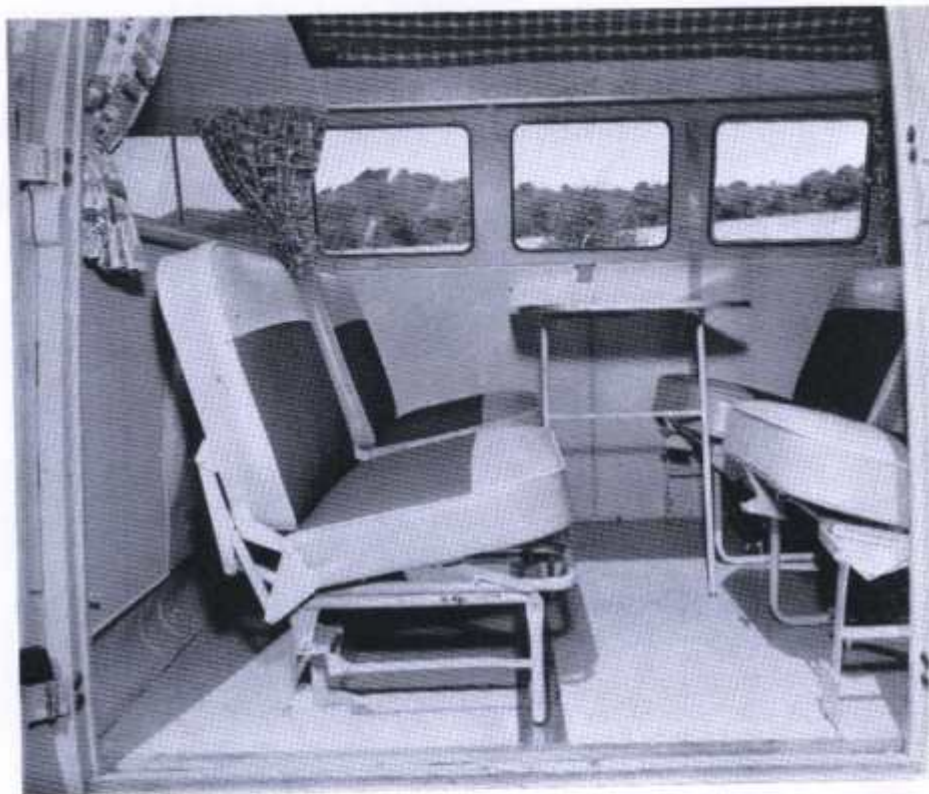
The roof panel is of translucent Fibreglass and double-coated P.V.C. construction, absolutely waterproof and rot-proof so that it can be folded when wet with no damage. It features the most secure anchorage of any elevating roof fitted to a motorised caravan. Spacious, airy interior. Operating the counter-balanced canopy is extremely easy; two telescopic arms lock the roof safely and automatically in position when open. When lowered it fits snugly to the roof line. A flashing light on the dash warns the driver against moving off with the roof raised. Two large safety glass windows and two transparent perspex opening panels for ventilation are fitted.

Roof Lining, Upholstery and Floor Covering

An attractive lining is fitted to the interior and sides of the roof. All seats are trimmed in "Duracour" to combine the advantages of long life with attractive colours and extreme comfort. The floor is covered in good quality hard-wearing lino, finished in harmonising colours.

Ventilation

Deeper side windows incorporate no-draught ventilating panels on each side, ensuring draughtless ventilation under all circumstances. Sliding windows are provided in the front doors and with quarter ventilator. In addition, one of the transparent panels in the Fibreglass roof may be opened to any degree desired.



View showing "Dormatic" seats in chair positions around table.

DORMOBILE





Interior view showing "Dormatic" seats in bed or bench position and cooker, sink, lockers and wardrobe, the cabinet work is all steel.

Sleeping for Two or Four

By operating the patent Dormatic seating mechanism, the front and back seats can be folded down instantly to form two full-length beds, measuring 6 ft. 0 in. in length and 1 ft. 11½ in. in width. When desired, these slide together to form a double bed measuring 6 ft. 0 in. in length and 4 ft. wide.

In addition to the above, sleeping accommodation for a further two persons is provided by folding stretcher-type beds, which are fixed to the body sides at roof level. Access to these upper bunks is rendered extremely easy by means of a cleverly designed folding step, which stows neatly away when not in use. These beds measure 6 ft. in length and 1 ft. 10 in. in width, and will accommodate a 6 ft. tall adult of corresponding weight. They fold away without occupying usable space.



DORMOBILE

Volkswagen Dormobile Caravan Dimensions

Exterior

Overall length	167½"
Overall width	70"
Overall height (unladen)	82"
Roof down	120"
Roof up	120"

Kerb Weight

1 ton, 3 cwt. 3 qtrs. 10 lbs.

Interior capacity, excluding drivers compartment
170 cubic feet

Road Fund

Taxation class As private car
Speed Restrictions As private car

Height:

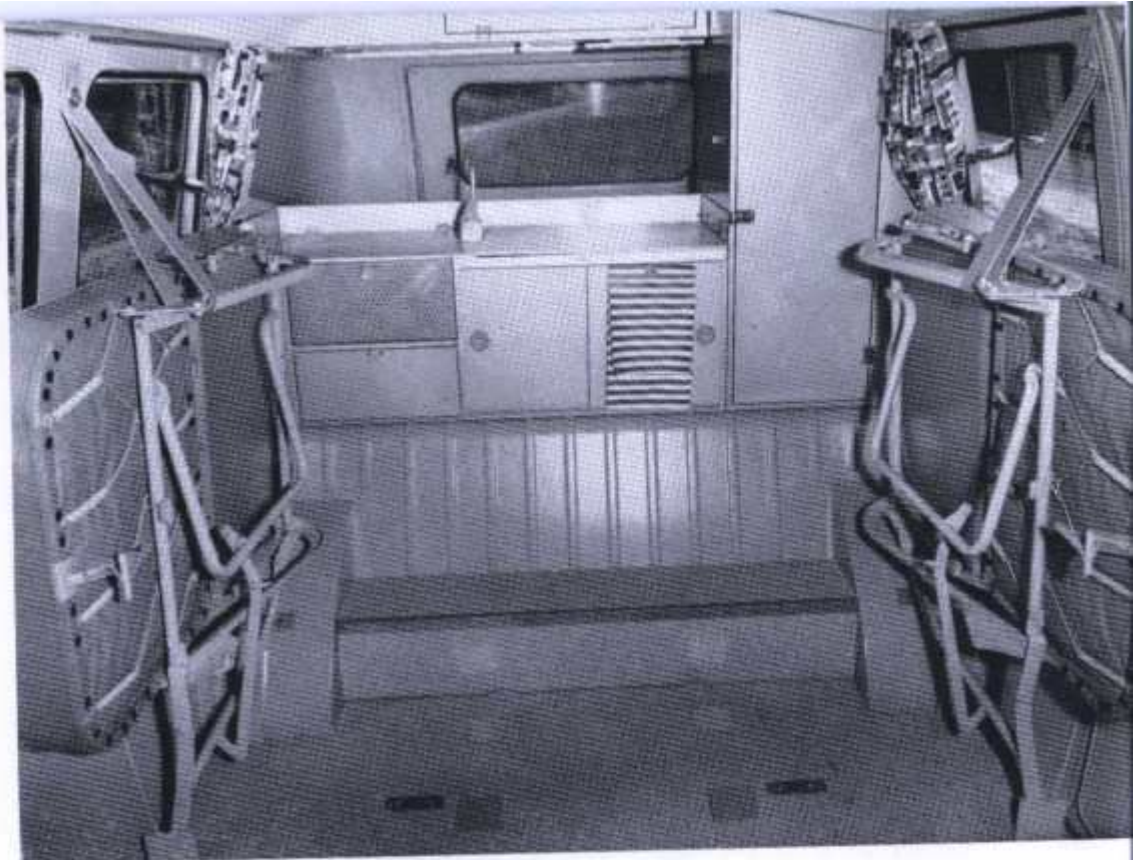
Roof up	99"
Roof down	59½"

The Volkswagen Dormobile Caravan is the very latest model from Martin Walter, whose designs are based on experience gained in building well over 8,000 motorised caravans.

The VW which is the basis of the Dormobile Caravan conversion, has been thoroughly proved over many years of progressive development; in all parts of the world. All the toughness, economy and reliability of the VW is built into the Martin Walter conversion.

This VW/Dormobile vehicle will satisfy the requirements of every type of user in any part of the world by virtue of versatility, good design and construction, backed by world wide service.

ASK YOUR DEALER FOR A DEMONSTRATION.



This interior view shows the Dormatic Seating folded against the body sides leaving the floor absolutely clear for carrying goods or bulky objects.

For full details of optional equipment, including camping gear and a wide range of luxury fittings and embellishments, ask for the Caravan Accessories price list.

For engine and chassis details, see VW van catalogues.





The vehicle described herein is the joint product of
VW MOTORS LTD. LONDON, and
MARTIN WALTER LTD., Folkestone.

Marketed in the U.K. through Volkswagen Dealers.
In accordance with a policy of progressive improvement,
the right is reserved to alter any details of price, specification
or equipment without notice.

Ask your Dealer for a demonstration

Or communicate with

VW MOTORS LTD., LORDS COURT,
32/34 ST. JOHN'S WOOD ROAD,
LONDON, N.W.8. Tel.: CUNningham 8000